

## ***CZ13:rj30Tg/+ (AB)***

### **Nature of the transgene**

The *rj30Tg* allele was generated by random integration of pT2(mpx:EGFP) construct.

### **Genotyping assay**

1. Genotyping of the *rj30Tg* allele is based on the fluorescent microscope. As identified by fluorescent microscope, the GFP fluorescence signal is detectable in myeloid-specific cells.

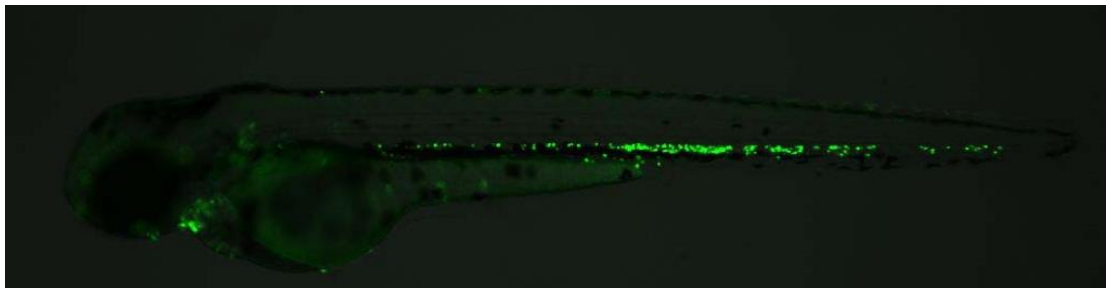


Figure. GFP expression in myeloid-specific cells at 3dpf in *rj30Tg* line.

2. Genotyping of the *rj30Tg* line can also be performed via allele-specific PCR using eGFP-specific primers (Sense primer: TGAGCAAGGGCGAGGAGC, antisense primer CTCGATGCGGTTCCACCAG, the length of PCR fragment is 371 bp).