

CZ46:mp170dTg/+(AB)

Nature of the mutation

The *mp170dTg* allele was generated by integration of a GFP-containing construct, expresses GFP in the heart at 48hpf.

Genotyping assay

Genotyping of the *mp170dTg* allele is based on the fluorescent microscope. As identified by fluorescent microscope, the GFP fluorescence signal is detectable at 48 hpf.

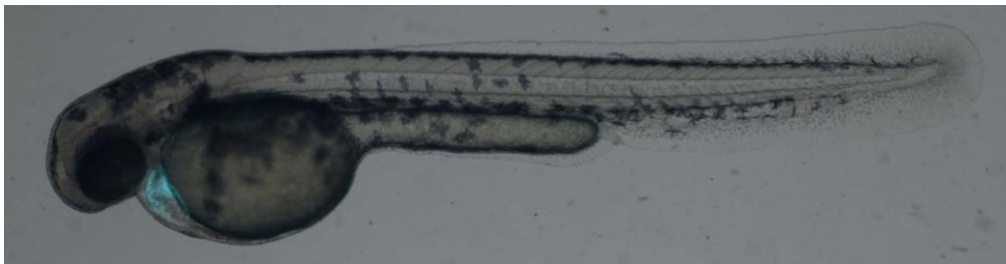


Figure. GFP expression in heart at 3dpf in *mp170dTg* line.