

***braf*^{ihb498/+} (CZRC catalog ID: CZ1286)**

Nature of the mutation

Between 846 bp to 855 bp of the wild-type *braf* coding sequence, CAGCACGGAG was deleted in exon 6.

Sense Strand Sequence

tgaaaaggaccacaaaacta^{aa}aatgaaatgaccaaaaagaatgaaatttgccttttgaagcatccaaagcattattttgttactcgac
agGTGCGAAAGACCTTCTTCACGCTGGCCTTCTGTGATTTTTGCCGGAAGCTGTTGT
TTCAAGGCTTCCGCTGTCAGACGTGTGGCTATAA^{GTTTCACCAGCGCTGCAGCA}CG
GAGGTCCCACATCATGTGTGTCAACTACGATCAGCTGGAGtgagtgctcatgggagatctttccctct
tctgaaaatgctcagtaaaaaaggcttgaaataaaacaattaattaattactctagttgatattcaccatcaagaaattaagttcagtc
att^{tattt}gtgcttttgcatt

Uppercase: Exon/coding sequence

Lowercase: intron/noncoding sequence

atcg: Forward/Reverse primer

atcg : Crispr/cas9 target site

Genotyping assay

Primers:

CZ1286_forward: 5' TGAAAAGGACCACAAAATA 3'

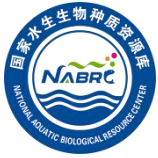
CZ1286_reverse: 5' AATGACAAAAGCACAAATA 3'

PCR program:

| | | |
|------|--------|-------------|
| 95°C | 5min | } 30 Cycles |
| 95°C | 30 sec | |
| 55°C | 30 sec | |
| 72°C | 30 sec | |
| 72°C | 8min | |
| 4°C | hold | |

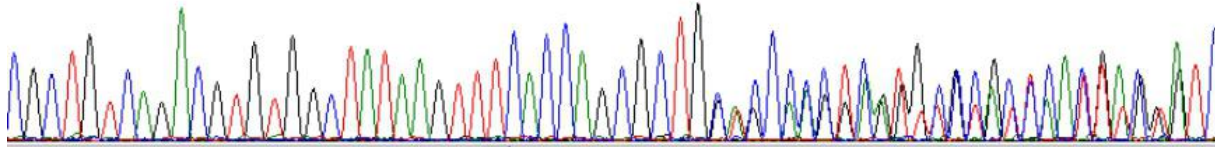
Product size: 390 bp





The sequencing results of the CZ1286:

130 140 150 160 170 180 15
CGC T G T C A G A C G T G T G G C T A T A A G T T T C A C C A G C G C T G C A C C C C C T C A T G C C C G C T C A C G A C G A T C



| | |
|--------|---|
| WT | CTTC TGTGATT TTTGCOGGAAGCTG TTGT TCAAGGCT TOCGCTG TCAGAOG TGTGGCTA |
| CZ1286 | CTTC TGTGATT TTTGCOGGAAGCTG TTGT TCAAGGCT TOCGCTG TCAGAOG TGTGGCTA |
| | ***** |
| WT | TAAG TTTCACOCAGOGCTG CAGCAOGGAGG TOCCACTCATGTGTG TCAACTACGATCAGCT |
| CZ1286 | TAAG TTTCACOCAGOGCT-----GG TOCCACTCATGTGTG TCAACTACGATCAGCT |
| | ***** |
| WT | GGAg t g a g t g c t c a t g g g a g a t c t t t c c t t c t t c t g a a a a a t g c t c a g t a a a a a g g c t |
| CZ1286 | GGAg t g a g t g c t c a t g g g a g a t c t t t c c t t c t t c t g a a a a a t g c t c a g t a a a a a g g c t |
| | ***** |
| WT | t g g a a t a a a a c a a t t a a t t a a t t a c t c t a g t t g a t a t t c a c c a t c a a a g a a t t a a g t |
| CZ1286 | t g g a a t a a a a c a a t t a a t t a a t t a c t c t a g t t g a t a t t c a c c a t c a a a g a a t t a a g t |
| | ***** |

Reference:

None

